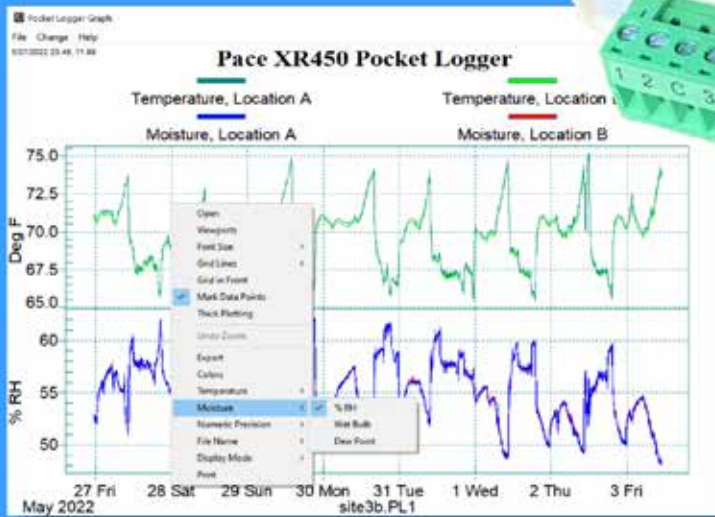


# Power and Simplicity



## XR450 Pocket Logger™

## A pocket-size Data Logger

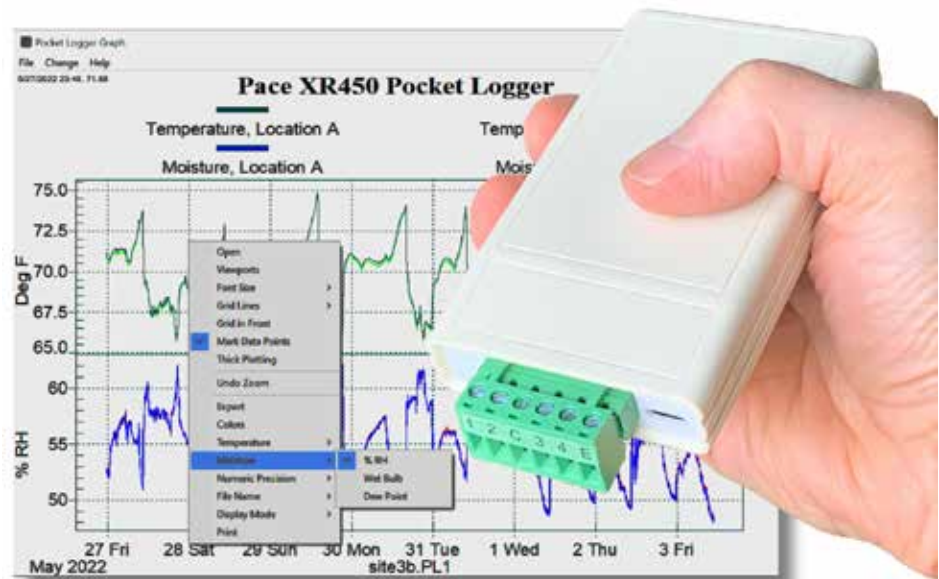
### with Sensors for:

- Temperature
- Relative Humidity
- Pressure
- AC Current
- Light and more!

### Also records:

- Process Signals
- Contact Closures

No  
Signal Conditioning  
or External Power  
Required!



Free software: [www.pace-sci.com/software-xr450.htm#Download](http://www.pace-sci.com/software-xr450.htm#Download)

NIST Traceable  
Certificate of Validation  
Included.

### Four channels

The XR450 Pocket Logger™ is a buttonless, four channel recorder designed for easy setup and trouble-free operation.

### Universal inputs

Connect any PACE sensor directly to any Pocket Logger input; you can mix and match sensors in any combination.

### Proven Reliability

Proudly manufactured in the USA, the Pocket Logger's reliability has been proven by years of tough field use. Accuracy specifications are maintained without user adjustment. An NIST traceable Certificate of Validation is included with each unit.

### Simplicity

With no power cord to run, and weighing only 6 ounces, you can mount a Pocket Logger anywhere. Unlike strip-chart recorders, there is no paper or ink, and no buttons - so no one can tamper with your data. In the field, your recorded data is easily transferred to a portable PC. Or carry the logger back to your office - in your pocket!

### Powerful Software

A Pocket Logger's data is quickly transferred to a computer running Pocket Logger Software®. The software runs on any Windows PC and may be freely downloaded from our website. For advanced users, a command line interface enables the Pocket Logger to communicate with other programs.

### No external power required

The XR450 with any mix of sensors shown on these pages requires no external power. Power is supplied from a internal 9V Lithium Battery (a standard 9V Alkaline battery may be used with reduced battery life).

### Multi-Year Battery Life

Suitable for logging over extended periods of time in standalone mode, battery life is over 3 years when logging readings every minute.

### Features

- Simple to use.
- Accepts over 50 direct-connect sensors.
- High accuracy:  $\pm 0.25\%$  at 12 bits.
- User-replaceable battery.
- Real time 'Strip Chart' display mode.



## Quick Setup

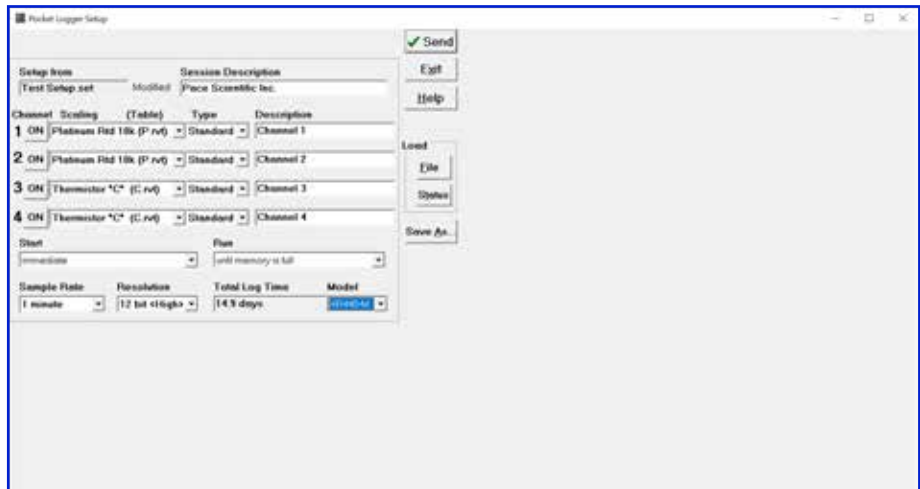
Select a sample rate, start and run mode, and sensor scaling. Descriptive labels for each sensor and the logging session may also be entered. Setups may be saved for later use.

## On-line documentation

Questions about sensor wiring and scaling are quickly answered using the context sensitive help.

## Free lifetime updates

Pocket Logger Software is compatible with the XR450 Pocket Logger and all earlier models, including our first loggers which shipped 32 years ago! The software is periodically updated with new capabilities. Updated software is posted on our website, available for free download.



## Presentation quality graphs

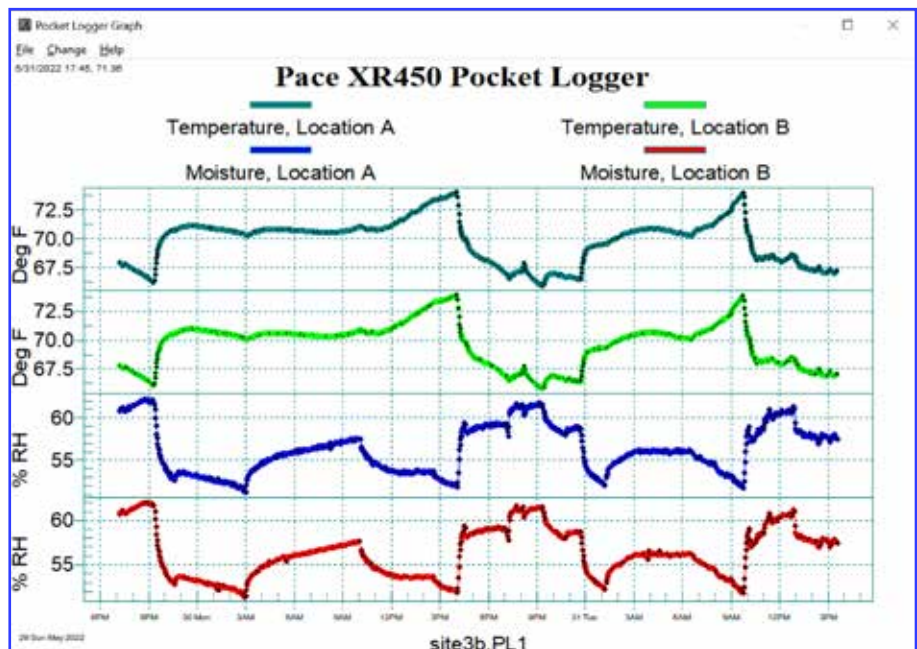
An easy to read graph is instantly available whenever you transfer data from the Pocket Logger or view data in Real Time. Existing data files are quickly selected and displayed.

Graph components easily changed include:

- Data traces (combine, separate, or hide).
- Time scale (zoom).
- Moisture scale (relative humidity, dew point, or wet bulb).
- Temperature scale (deg C / deg F).
- Trace thickness.
- Color of any graph component.
- Font size.

## Export data

All or any portion of your logged data may be quickly exported to Excel or other programs.



## PT9xx Temperature Probes

Pace PT9xx Series Temperature Probes connect to any Pocket Logger input channel and contain a precision 30k ohm thermistor. Using 24 AWG copper wire, leads may be extended to over 100 FT (30 meters) with no degradation in accuracy. Accuracy specifications on page 15. Full details: [www.pace-sci.com/thermistor.htm](http://www.pace-sci.com/thermistor.htm)

### Common Features

- Accuracy  $\pm 0.15^{\circ}\text{C}$  from  $0^{\circ}\text{C}$  to  $40^{\circ}\text{C}$
- Extend leads with ordinary copper wire
- $\pm 0.1^{\circ}\text{C}$  interchangeability



Size Comparison - PT9xx Series

### PT916



Closed end 1/8 inch (3.175 mm) diameter stainless steel tube. Available in three lengths: 4, 6 and 12 inch (101, 152 and 304 mm). Teflon insulated 24 gage leads. Inserts into a Pete's Plug or CF916 fitting (below). Suitable for HVAC and general temperature applications.

**Continuous temperature:**  $-50$  to  $75^{\circ}\text{C}$  ( $-58$  to  $167^{\circ}\text{F}$ )  
**Intermittent maximum:**  $302^{\circ}\text{F}$  ( $150^{\circ}\text{C}$ )  
**Lead length:** 3 feet (0.9m)  
**Interchangeability:**  $\pm 0.1^{\circ}\text{C}$  from  $0$  to  $70^{\circ}\text{C}$  ( $32$  to  $158^{\circ}\text{F}$ )

### CF916-1/8

Optional bored-through stainless steel fitting for PT916 probe. 1/8 NPT male threads. Also compatible with PT450 Thermocouple Probe.



### PT960



Rugged stainless steel probe, 6 mm (0.236") diameter and 50 mm (approx 2 inch) length with 6.1 meter (20 ft) cable. TPE jacketed cable with a diameter of 3.3 mm (0.13"), a round cross section and 24 gage, polypropylene insulated leads. Suitable for immersion, HVAC, and soil burial applications. Probe's cable is not recommended for immersion in fuels (fuel splashing on cable is OK).

**Temperature range:**  $-40$  to  $100^{\circ}\text{C}$  ( $-40$  to  $212^{\circ}\text{F}$ )  
**Lead length:** 20 feet (6.1m)  
**Interchangeability:**  $\pm 0.1^{\circ}\text{C}$  from  $0$  to  $70^{\circ}\text{C}$  ( $32$  to  $158^{\circ}\text{F}$ )

### PT907



Closed end mylar tube 0.127" x 0.375" length. Parallel bonded 24 gage wire with PVC insulation, 4FT length. Not rated for immersion.

**Temperature range:**  $-50$  to  $105^{\circ}\text{C}$  ( $-58$  to  $221^{\circ}\text{F}$ )  
**Lead length:** 4 feet (1.2m)  
**Interchangeability:**  $\pm 0.1^{\circ}\text{C}$  from  $20$  to  $45^{\circ}\text{C}$  ( $68$  to  $113^{\circ}\text{F}$ )

### PT450 Thermocouple Probe - Type J

Requires Mvt-50u Module - see page 10



**Temperature Range:**  $-130^{\circ}\text{C}$  ( $-202^{\circ}\text{F}$ ) to  $760^{\circ}\text{C}$  ( $1400^{\circ}\text{F}$ )  
**Description:** 6" x 1/8" dia. Stainless Steel sheath with 10 FT Teflon-Insulated Cable.





## Relative Humidity & Temperature Probe

Uses two Pocket Logger channels. A total of two RH & Temp. Probes may be connected to one Pocket Logger. *Relative Humidity data is easily converted to Wet Bulb or Dew Point with a mouse click.*

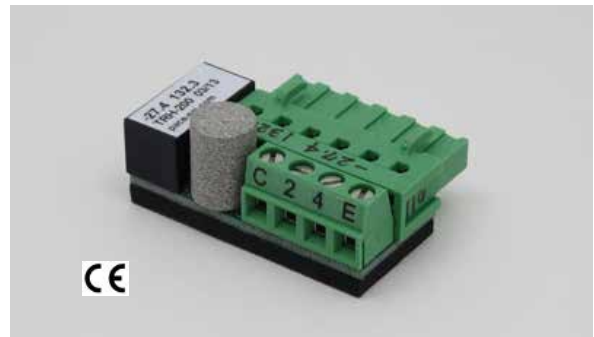
- High Accuracy
- Long Term Stability



<b>Operating Temperature:</b>	-40 to 85°C (-40 to 185°F)
<b>Humidity Range:</b>	0-95% R.H.
<b>Accuracy:</b>	±3% RH from 0 to 95% RH
<b>Stability:</b>	±1% RH typical at 50% RH in 5 years
<b>Repeatability:</b>	±0.5% RH
<b>Physical:</b>	Rugged housing with sintered SS filter.
<b>Size:</b>	0.5" dia x 2.5" long (13mm x 64mm)
<b>Temperature accuracy:</b>	See Specifications, page 15
<b>Interchangeability:</b>	±0.1°C from 0 to 70°C (32 to 158°F)
<b>Full Details:</b>	<a href="http://www.pace-sci.com/humidity.htm">www.pace-sci.com/humidity.htm</a>
<b>Part No:</b>	Three lead lengths are available
TRH-100	12" (0.3 meter) leads
TRH-100-10FT	10 ft (3 meter) shielded cable
TRH-100-20FT	20 ft (6 meter) shielded cable

## Relative Humidity & Temperature Module

Plugs into Pocket Logger, replacing the detachable terminal block. Uses two channels, one for temperature, and one for humidity / wet bulb / dew point. Same specifications as probe on left except for tem-



perature and humidity range (see below). Two channels are available for other PACE sensors, 0-5 vdc or resistive signals.

<b>Operating Temp:</b>	-40 to 60°C (-40 to 140°F)
<b>Humidity Range:</b>	0-90% R.H.
<b>Size:</b>	Adds 0.36" (9 mm) to Pocket Logger's length
<b>Full Details:</b>	<a href="http://www.pace-sci.com/Humidity_module.htm">www.pace-sci.com/Humidity_module.htm</a>
<b>Part No:</b>	TRH-200

## Humidity, Light & Temperature Module

Same as module above, but includes built-in light sensor for logging light levels. Channel 4 is available for a PACE sensor, 0-5vdc or resistive signal.



<b>Operating Temp:</b>	-30 to 60°C (-22 to 140°C)
<b>Humidity Range:</b>	0-90% R.H.
<b>Size:</b>	Adds 0.36" (9 mm) to Pocket Logger's length.
<b>Part No:</b>	TRH-300
	For details see: <a href="http://www.pace-sci.com/humidity-temperature-light-module.htm">www.pace-sci.com/humidity-temperature-light-module.htm</a>



## Pressure Sensors

- Connect to any Pocket Logger input
- Pace Pressure Sensors require no external power!

## Series P400

- High Accuracy - For Dry Air or Inert Gases
- Differential/Gage or Absolute Pressure
- Waterproof, Epoxy Encapsulated Housing



<b>Pressure ranges:</b>	Listed below
<b>Combined repeatability, linearity and hysteresis:</b>	±0.25%
<b>Total error band:</b>	±1%, of F.S. (except ±2 inch model: ±2% of F.S.) over compensated temperature range.
<b>Operating temperature:</b>	Psi models: -25 to 90°C Inch H2O model: -10 to 85°C
<b>Compensated range:</b>	Psi models: -20 to 85°C Inch H2O model: 0 to 60°C
<b>Pressure media:</b>	Dry air or non-ionic (inert) gas.
<b>Physical:</b>	Molded thermoplastic housing, three color-coded 12" (0.3 m) leads, ports accept 3/32" or 3 mm I.D. tubing, or 1/8" I.D. tubing w/ included adapters.
<b>Common mode pressure:</b>	150 psi
<b>Full details:</b>	<a href="http://www.pace-sci.com/pressure-400.htm">www.pace-sci.com/pressure-400.htm</a>
<b>Weight:</b>	0.3 oz. (8 grams)
<b>Overall size:</b>	0.9" x 0.6" x 0.75" (23 x 15 x 19 mm)
<b>Part Numbers:</b>	P400-D-2-inch (±2 inch H2O) P400-D-1-psi (±1 psi ±27.7 inch H2O) P400-D-15-psi (±15 psi) P400-D-30-psi (±30 psi) P400-A-15-psia (±15 psi Absolute)



## Series P600

- High Accuracy - For Dry Air or Inert Gases
- Waterproof, Epoxy Encapsulated Housing



**Total error band:** ±1.5% of span from 0 to 60°C

**Operating temp. range:** -40°C to 70°C (-4°F to 158°F)

**Pressure media:** Dry air or non-ionic (inert) gas.

**Physical:** Molded thermoplastic housing, three color-coded 12" (0.3 m) leads, ports accept 3/32" or 3 mm I.D. tubing, or 1/8" I.D. tubing w/ included adapters.

**Full details:** [www.pace-sci.com/pressure-600.htm](http://www.pace-sci.com/pressure-600.htm)

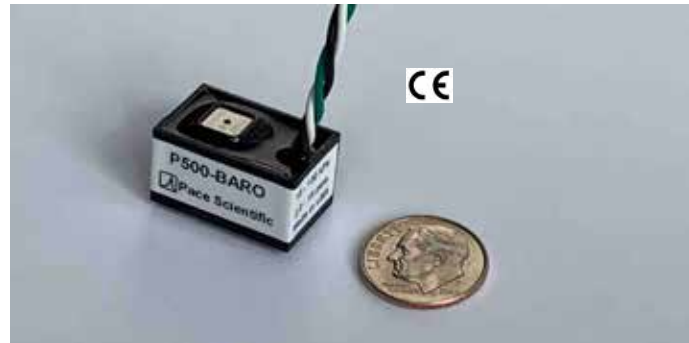
**Overall size:** 1.89 x 1.03 x 0.98" high  
(48 x 26 x 25 mm high)

**Part Numbers:**

P600-D-5-inch	(±5 inch H2O)
P600-D-5-inch	(±10 inch H2O)
P450-D-1-psi	(±1 psi ±27.7 inch H2O)

## Barometric Pressure Sensor

- Pressure Media: Moist or Dry Air
- Pressure Range: 150 to 1300 millibar



**Total error band (0-85°C):** ±1.5% of Span

**Operating temp. range:** -40 to 93°C (-40 to 200°F)

**Size:** 0.9 x 0.6 x 0.6" (23 x 15 x 15 mm)

**Part No:** P500-BARO

**Optional Mounting Base:** MB-4500

Readings may be scaled to read in any unit of pressure; see [www.pace-sci.com/barometric-pressure-sensor.htm](http://www.pace-sci.com/barometric-pressure-sensor.htm) for details.

*Power Limitation: A maximum of three P500-BARO may be powered from one XR450 Pocket Logger.*



## Series P1600

For Compressed Air, Hot and Cold Water, Gas, Oil, Refrigerant, Steam and similar applications.



**Total Error Band:** ±1.0% of Span: -20 to 85°C (-4 to 185°F)  
 ±1.5% of Span: -40 to -20°C (-40 to -4°F)  
 ±1.5% of Span: 85 to 125°C (185 to 257°F)

**Pressure Port:** 1/4" NPT Male, 304 SS material

**Operating Temperature:** -40°C to 125°C (-40 to 257°F)

**Physical:** NEMA 4X housing.

**Overall Size:** 1.15" dia. x 2.7" (29 mm x 69 mm)

**Cable Length:** 10 ft (3 meter) cable

**Full Details:** [www.pace-sci.com/pressure-1600.htm](http://www.pace-sci.com/pressure-1600.htm)

<b>Part Numbers (range):</b>	P1600-30	(0-30 psig)
	P1600-50	(0-50 psig)
	P1600-100	(0-100 psig)
	P1600-200	(0-200 psig)
	P1600-500	(0-500 psig)
	P1600-1000	(0-1000 psig)
	P1600-1500	(0-1500 psig)
	P1600-2000	(0-2000 psig)
	P1600-3000	(0-3000 psig)
	P1600-5000	(0-5000 psig)
	P1600-7500	(0-7500 psig)
	P1600-10000	(0-10,000 psig)
	P1600-14500	(0-14,500 psig)
	P1600-vac-30	(vacuum-30 psig)
	P1600-vac-150	(vacuum-150 psig)
	P1600-vac-300	(vacuum-300 psig)

## Series P1650

For Compressed Air, Hot and Cold Water, Gas, Oil, Refrigerant, Steam and similar applications.  
 Lower Pressure Ranges compared to the P1600 Series



**Total Error Band:** ±1.5% of Span: -20 to 85°C (-4 to 185°F)  
 ±2% of Span: -40 to -20°C (-40 to -4°F)  
 ±2% of Span: 85 to 125°C (185 to 257°F)

**Pressure Port:** 1/4" NPT Male, 316 SS material

**Operating Temperature:** -40°C to 125°C (-40 to 257°F)

**Physical:** NEMA 4X housing.

**Overall Size:** 1.15" dia. x 2.7" (29 mm x 69 mm)

**Cable Length:** 10 ft (3 meter) cable

**Full Details:** [www.pace-sci.com/pressure-1650.htm](http://www.pace-sci.com/pressure-1650.htm)

<b>Part Numbers (range):</b>	P1650-5	(0-5 psig)
	P1650-15	(0-15 psig)
	P1650-vac-0	(vacuum-0 psig)
	P1650-vac-15	(vacuum-15 psig)
	P1650-15-A	(0-15 psia)
	P1650-30-A	(0-30 psia)





## AC Current Sensors

- Connect to any Pocket Logger input
- Self powered
- Monitor AC motors or any AC load
- Accurate to 1% of full scale
- Split Core design - easy to install



**Input Current:** AC current, single phase 50/400Hz, load power factor 0.5 to 1.0 lead or lag.

**Accuracy\*:** ±1% of reading from 10% to 100% of full scale. ±3% of reading at 5% of full scale.

\* see website for Accuracy specs for SC20A and SC50A

**Temperature effect:** ±0.05% from -20 to 55°C (-4 to 131°F).

**Response Time:** 250 ms. (input from 10% to 90% of F. S.)

**Ripple:** 0.5%

**Voltage Rating:** 600 VAC. Tested with full wave 10 kV impulse for 60 seconds.

**Overload:** 1.6x full scale (continuous).

**Surge:** 3x full scale.

**Output cable:** 8 ft signal cable (2.4meter)

**Size:** 1.25" thick. Other dimensions below.

**Full details:** [www.pace-sci.com/ac-current.htm](http://www.pace-sci.com/ac-current.htm)

Part No.	Range	Window	Length	Width
SC20A	0-20 amp ac	0.5" square	2.6"	2.3"
SC50A	0-50 amp ac	0.5" square	2.6"	2.3"
SC100A	0-100 amp ac	0.5" square	2.6"	2.3"
SC200A	0-200 amp ac	1.0" square	3.3"	3.0"
SC500A	0-500 amp ac	2.0" square	4.1"	4.0"
SC1000A	0-1000 amp ac	4.0" square	6.1"	6.0"
SC1500A	0-1500 amp ac	2.5" square	5.4"	4.7"

## AC Voltage Sensor

- Connect to any Pocket Logger input
- Self Powered
- Rugged DIN mount case
- For monitoring 24 / 120/ 240 vac circuits



**AC Voltage range:** 0-300

**Frequency Range:** 48 to 400 Hz

**Voltage Overload:** Full scale rating

**Response:** 400 milliseconds

**Accuracy:** ±0.5% of F.S. (Includes effects of linearity from 10% to 100% F.S.)

**Temperature effect:** (-20°C to 65°C): ±1.0%

**Output Ripple:** Less than 1% full scale

**Output:** 0 to 5vdc linear

**Weight:** 4 oz.

**Dielectric Test** (input/output isolation): 1500 VAC

**Burden:** 2.0 VA

**Size:** 1.5"H x 3.5"W x 2"D

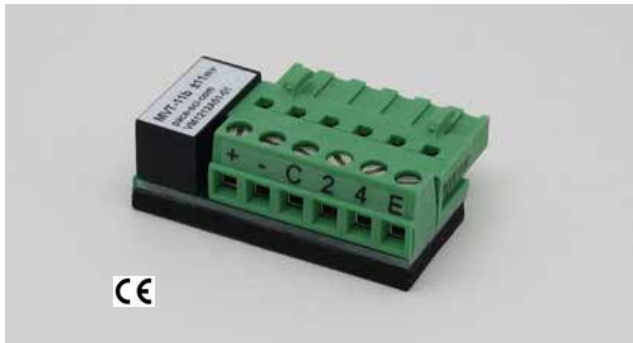
**Full Details:** [www.pace-sci.com/ac-voltage.htm](http://www.pace-sci.com/ac-voltage.htm)

**Part No:** SV300 (0-300 VAC)

*IMPORTANT - AC Voltage Sensor must be mounted and wired in a box, panel or suitable enclosure.*



## Thermocouple / Millivolt Modules



Two millivolt plug-in modules are available, each with a different millivolt range. One module, the Mvt-50u, also accepts a Thermocouple (Type J, K, N, R, S, T, B, C or E). A built-in, precision thermistor provides ambient temperature readings and for thermocouples, cold junction compensation.

A millivolt module configures a Pocket Logger as follows: Channel 1: Ambient temperature. Channel 3: Millivolt signal (or thermocouple if Mvt-50u). Channels 2 and 4: 'Standard' channels for any Pace sensors, or 0-5 vdc or resistive signals.

**Operating temperature:** -40°C to 60°C (-40°F to 140°C)  
**Size:** Adds 0.35" (9 mm) to XR450's length, no change to XR450's height and width.  
**Thermistor Sensor:** ±0.1°C interchangeability, 0-70°C  
**Millivolt input type:** Single ended, (-) terminal internally connected to dc ground.  
**Millivolt input impedance:** Greater than 10 Megohm.  
**Web page:** [www.pace-sci.com/thermocouple.htm](http://www.pace-sci.com/thermocouple.htm)

Individual Specifications		
Model:	Mvt-50u	Mvt-500u
Range:	0-50 mv	0-500mv
Resolution (12 bits):	12 µV	120 µV
Input Offset:	5 µV max	5 µV max
Input Offset Drift:	0.05 µV per °C max	0.05 µV per °C max
Thermocouple	YES	NO
System Accuracy:	0.4% of F.S. max	0.4% of F.S. max

## Thermocouple Specifications

for Mvt-50u

Maximum Temperature	
Type	Mvt-50u*
J	760°C (1400°F)
K	1220°C (2228°F)
N	1300°C (2372°F)
R	1760°C (3200°F)
S	1760°C (3200°F)
T	350°C (662°F)
B	1820°C (3308°F)
C	2320°C (4208°F)
E	660°C (1220°F)
Resolution (12 bit mode, approximate)	
Type	Mvt-50u*
J, T	0.2°C (0.4°F)
K, N	0.3°C (0.5°F)
R	0.8°C (1.4°F)
S, B	1.0°C (1.8°F)
C	0.6°C (1.1°F)
E	0.15°C (0.3°F)
Minimum Temperature	
Type	Mvt-50u*
J	-130°C (-202°F)
K, N	-50°C (-58°F)
T	-200°C (-328°F)
E	-100°C (-148°F)
R, S, B, C	0°C (32°F)

### \*Mvt-50u Limitation:

If you use the Mvt-50u with a thermocouple, it must be set (in Pocket Logger Software) for either high or low (cold) temperature. When set for high temperatures, the lowest readable temperature is the ambient temperature of the Mvt Module. When set for low temperatures, the highest readable temperature is the ambient temperature of the Mvt Module.

**Part Numbers:** Mvt-50u, Mvt-500u (2 models)

### Type J Thermocouple Probe:

Stainless Steel sheath 6" long x 1/8" dia. Includes 10 ft (3 meter) Teflon cable.

Part Number: PT450  
(accepts CF-916-1/8 Fitting - see page 4)



## Input Scaling Module

- Five DC voltage ranges available
- Connects directly to a Pocket Logger
- Many possible configurations



A plug-in miniature input scaler and terminal block for use in place of the Pocket Logger’s detachable terminal block. Enables the Pocket Logger to accept additional input ranges (see table below).

Input Type	Dash number
+/-5vdc	-5v
0-10vdc	-10v
0-20vdc	-20v
0-30vdc	-30v
0-60vdc	-60v
4-20ma	-20m
‘Standard’ input (for all Pace sensors, 0-5vdc and resistance.	-S

Module scaling is fixed at the factory and must be specified when ordering. A channel specified as ‘-S’ is a ‘Standard’ Pocket Logger input for Pace sensors, 0-5vdc or resistive signals.

**Input impedance:** All vdc input ranges: 100k ohms.

**Size:** Adds 0.36” (9 mm) to Pocket Logger’s length.

**Web page:** [www.pace-sci.com/voltage.htm](http://www.pace-sci.com/voltage.htm)

**Part No:** ISM-x-x-x-x\*

\*Substitute a dash number from the table above for each channel (1-2-3-4). For example, ISM-S-S-5v-5v specifies an Input Scaling Module with ‘Standard’ inputs for channels 1 and 2 and +/-5vdc inputs for channels 3 and 4.

Note: In order to implement an external start/stop logging trigger, channel 1 must be a ‘Standard’ (-S) input.



Pace Scientific, Inc.

PO Box 2263, Boone NC 28607 USA sales@pace-sci.com Tel: 704-799-0688

Website: [www.pace-sci.com](http://www.pace-sci.com)

## Accelerometers

Connects directly to a Pocket Logger, no external power required.  
If the temperature sensor and all three axis are utilized, this sensor will use all four Pocket Logger channels.

- Triple Axis Accelerometers
- $\pm 3$  g and  $\pm 16$  g models
- Waterproof IP67 Protection
- Internal Precision Temperature Sensor
- Cable length 8 ft or 30 ft (2.4 or 9.1 meters)



<b>Sensitivity:</b>	SA-03: $\pm 3$ g SA-16: $\pm 16$ g
<b>Nonlinearity:</b>	$\pm 0.3\%$ of F.S.
<b>Frequency Bandwidth:</b>	50 Hz
<b>Noise, X &amp; Y outputs:</b>	$\pm 0.1\%$ F.S.
<b>Noise, Z output:</b>	SA-03: $\pm 0.2\%$ F.S. SA-16: $\pm 0.1\%$ F.S.
<b>Temperature Effects:</b>	$\pm 0.03\%$ per deg C
<b>Input Power, Voltage:</b>	4 - 18 Vdc (Pace data logger supplies 5 V power).
<b>Input Power, Current:</b>	approx. 0.4 mA
<b>Output Signal Range:</b>	0 to 3.3 Vdc
<b>Nominal 0 g output:</b>	1.65 Vdc (X, Y, Z outputs)
<b>Physical:</b>	Waterproof, epoxy-potted thermoplastic housing.
<b>IP Rating:</b>	IP67 / NEMA 4X
<b>Dimensions:</b>	52 x 35 x 15 mm (2.03" x 1.39" x 0.6")
<b>Web page:</b>	<a href="http://www.pace-sci.com/accelerometer.htm">www.pace-sci.com/accelerometer.htm</a>

Part Number	Minimum Range	Cable Length	Temperature Sensor
SA-03	$\pm 3$ g	8 ft (2.4 m)	YES
SA-03-30FT	$\pm 3$ g	30 ft (9 m)	YES
SA-16	$\pm 16$ g	8 ft (2.4 m)	YES
SA-16-30FT	$\pm 16$ g	30 ft (9 m)	YES

## Solar Radiation Sensor

Connects directly to a Pocket Logger, no external power required.

- Suitable for meteorological, solar energy, agricultural and botanical applications.
- Measures solar irradiance from 360 to 1120 nanometers.



**SRS-200 Solar Radiation Sensor mounted on the SRS-LB Combination Leveling Plate and Mounting Bracket**

<b>Sensor Type</b>	Silicon Cell Pyranometer
<b>Operating Temp.</b>	$-40^{\circ}$ to $70^{\circ}$ C ( $-40^{\circ}$ to $158^{\circ}$ F)
<b>Measurement Range</b>	0 to 1250 Watts per Square Meter (W/m <sup>2</sup> )
<b>Uncertainty:</b>	Calibration Uncertainty: $\pm 5\%$
<b>Repeatability:</b>	Measurement Repeatability: Less than 1%
<b>Long-term Drift:</b>	Less than 2% per year
<b>Nonlinearity:</b>	Less than 1%
<b>Directional Error:</b>	Less than $\pm 2\%$ at solar zenith angle of $45^{\circ}$ Less than $\pm 5\%$ at solar zenith angle of $75^{\circ}$
<b>Temp. Coefficient:</b>	$0.04 \pm 0.04\%$ per $^{\circ}$ C
<b>Resolution:</b>	0.6 W/m <sup>2</sup>
<b>Spectral Range:</b>	360 to 1120 nanometers (10% points)
<b>Response Time:</b>	Less than 1 ms
<b>Power requirement:</b>	5 Vdc (0.3 ma typical current draw)
<b>Cable Length:</b>	5 meters (16.4 ft)
<b>Cable Type:</b>	3 conductor, Santoprene rubber jacket
<b>Dimensions:</b>	24 mm diameter, 28 mm height (0.94" diameter, 1.10" height)
<b>Web page:</b>	<a href="http://www.pace-sci.com/solar-radiation.htm">www.pace-sci.com/solar-radiation.htm</a>
<b>Part Numbers:</b>	SRS-200 (Solar Radiation Sensor) SRS-LB (Mtg Bracket and Leveling Plate pictured above)



## Low-profile Weatherproof Case



Rugged molded case withstands all weather conditions. Features a hinged cover, quick release latch, continuous rubber seal and two cable fittings. Fittings accept cable diameters up to 0.25" (6.3 mm). Available in Black only. Yellow case pictured above is no longer available.

**Overall size:** 8.1" x 3.9" x 2.5" deep  
**Weight:** 9.6 oz., 272 grams  
**Protection rating:** NEMA 4X / IP65  
**Web page:** [www.pace-sci.com/ec24.htm](http://www.pace-sci.com/ec24.htm)  
**Part No:** EC24-BLK (color: Black)

## Heavy-duty Weatherproof Case



Rugged molded case withstands all weather conditions. Features a hinged cover, continuous neoprene o-ring seal, quick release latches, and fold-up carrying handle. Six feed-through cable glands accept cable diameters up to 0.25" (6.3 mm). Can be padlocked for security.

**Overall Size:** 8.2" x 6.5" x 3.5" deep (208 x 165 x 90 mm).  
**Weight:** 22 oz. (607 grams)  
**Protection rating:** NEMA 4X / IP65  
**Web page:** [www.pace-sci.com/ec506.htm](http://www.pace-sci.com/ec506.htm)  
**Part No:** EC506

## Compact Weatherproof Case



Rugged molded case withstands all weather conditions. Features a hinged cover, continuous neoprene o-ring seal and two quick release latches. Six cable fittings installed on side of case. Fittings accept cable diameters up to 0.25" (6.3 mm).

**Overall size:** 6.5" x 5" x 3.3" deep  
**Weight:** 11 oz., 312 grams  
**Protection rating:** NEMA 4X / IP65  
**Web page:** [www.pace-sci.com/ec44.htm](http://www.pace-sci.com/ec44.htm)  
**Part No:** EC44

## Cases compared

**Web page:** [www.pace-sci.com/cases-xr450.htm](http://www.pace-sci.com/cases-xr450.htm)

**EC24:**  
 Smallest case; 25% smaller by volume than the EC44 with a narrow profile. Only 2 cable fittings, and with the -IC option only one cable fitting is available for sensor/signal cables.

**EC44:**  
 Compact case, smaller than the EC506. Includes 6 cable fittings (same as EC506).

**EC506:**  
 Heavy-duty case, about twice as large as the EC44. Includes 6 cable fittings (same as EC44), includes folding carrying handle and accepts a padlock.





## Ordering

BY PHONE	(704) 799-0688 Business hours: Mon-Fri, 9 am to 5 pm EST.
BY E-MAIL	<a href="mailto:sales@pace-sci.com">sales@pace-sci.com</a>
BY MAIL	Mail orders to: Pace Scientific / Sales Dept PO Box 2263 Boone, NC 28607
PAYMENT	We accept payment by check, VISA, MasterCard or C.O.D. Corporate purchase orders accepted upon credit approval. North Carolina residents must include applicable sales tax.
WARRANTY	<p>The XR450 Pocket Logger is backed by a 3 year limited warranty. All other products are backed by a 1 year limited warranty. Products that are damaged or modified are not covered.</p> <p>Pace Scientific's sole obligation for products that prove defective will be replacement, repair, or refund, at our discretion, for products returned within the warranty period. In no event shall Pace Scientific's liability exceed the buyer's purchase price.</p>
SUPPORT	Free technical support is available by phone during business hours. Or email your questions to: <a href="mailto:support@pace-sci.com">support@pace-sci.com</a>
RETURNS	Returns must be made within 30 days after delivery. We do not accept returns shipped to us C.O.D. Special order or damaged items are not returnable. Shipping and C.O.D. charges are not refundable.
EXPORT ORDERS	Please click the "International Distributors" link at the top of any page on our website for a local distributor. If your country is not listed, you are welcome to order directly from our USA facility. Prepayment in U.S. funds is required. You may pay by MasterCard, VISA, wire transfer or check drawn on a U.S. bank. Contact us for shipping charges and wire transfer information.



<b>Size:</b>	4.70" x 2.40" x .93"; (120 x 61 x 24 mm).
<b>Weight (with battery):</b>	6 ounces; 156 grams.
<b>Case material:</b>	Impact resistant ABS plastic.
<b>Operating limits:</b>	-40 to 60°C (-40 to 140°F). 5-90% R.H. (non-condensing).
<b>Clock accuracy:</b>	+/-1 min per month (-20 to 60°C).
<b>Battery:</b>	9 volt (user replaceable).
<b>Battery life:</b>	Est. 2-3 years of continuous operation;
<b>Battery Monitor:</b>	Battery voltage displays in Status display of Pocket Logger Software, and is written on the first line of every transferred data file.
<b>Data Retention:</b>	Over 200 years with no power.
<b>Data rate:</b>	19.2 Kb/sec.
<b>Number of channels:</b>	Four.
<b>Starting modes:</b>	Three: Start after download, Start at pre-set time and date, Start on trigger. <sup>1</sup>
<b>Running modes:</b>	Three: Run continuous (memory wraps around), Stop when memory is full, Stop on trigger. <sup>1</sup>
<b>Sampling modes:</b>	Two: Single point or Average (accumulate readings every 2 secs; compute and store average value).
<b>Sampling rates:</b>	Twenty: From 2 secs to 12 hours. Plus 8 fast log rates from 200 Hz to 1 Hz with reduced functionality. <sup>2</sup>
<b>Real time display:</b>	Channel readings updated every 2 secs on PC; can be active while recording.
<b>Input termination:</b>	Removable screw-type terminal block.
<b>Input impedance:</b>	Greater than 5 Megohm (when sampling).
<b>Input protection:</b>	Over/under voltage, 40amps peak 8/20 us
<b>Memory capacity:</b>	86,016 readings.
<b>Temperature accuracy:</b> <sup>3</sup> (logger + probe)	±0.15°C from 0 to 40°C. (±0.27°F from 32 to 104°F). ±0.3°C from -25 to 85°C. (±0.55°F from -13 to 185°F).
<b>Voltage input accuracy:</b>	±0.25% of full scale.
<b>Resolution:</b>	0.025°C from 0 to 40°C. 0.063°C or better from -25 to 75°C. 0.125°C or better from -45 to 100°C. 0.025% of full scale.

## Available Sensors

Over 50 direct-connect sensors are available for the XR450 including Temperature, Pressure, Light, Humidity/Dew Point, AC Current and AC Voltage. Sensors may be mixed and matched in any combination. See Accessories for details.

## Input Ranges

Inputs auto-configure for sensor or input range selected in software and include 0-5vdc, 2 wire resistance (30k ohm midpoint), and 3 wire resistance (minimum 2k ohm). Plug-in modules are available for millivolt inputs, +/-5vdc, 0-10, 0-20, 0-30, 0-60vdc and 4-20 ma.

## Warranty

The XR450 Pocket Logger is backed by a 3 year limited warranty. Accessories are backed by a 1 year limited warranty.

## NOTES

<sup>1</sup>Triggering requires a switch, temperature probe or 2 wire resistance on channel 1. Channel 1 may be set 'OFF' while triggering to maximize memory capacity of 'ON' channels.

<sup>2</sup>Communication with PC is not available while Fast Logging (1-200Hz) is active.

<sup>3</sup>Assumes use of Pace PT9xx series temperature probes.

Specifications subject to change without notice.

Copyright © 2023 Pace Scientific Inc.  
All Rights Reserved.

Pocket Logger is a trademark of Pace Scientific Inc.



# Pocket Logger™ Export Price List

**Pocket Logger:** XR450 .....439.

*Each Pocket Logger includes battery, terminal block and Certificate of Validation traceable to NIST.*

*Pocket Logger Software is a free download at [www.pace-sci.com/software-xr450.htm#Download](http://www.pace-sci.com/software-xr450.htm#Download)*

*Magnets: The Pocket Logger ships with magnetic pads affixed to its underside to simplify mounting. To specify rubber pads in place of magnets, add -RP to part number.*

USB-C Cable, 5ft USB-C.....12.

**Temperature Probes**  
 PT907 .....22.  
 4 inch SS sheath PT916-4.....48.  
 6 inch SS sheath PT916-6.....51.  
 12 inch SS sheath PT916-12.....52.  
 1/8 NPT fitting for PT916 CF-916-1/8.....20.  
 Submersible, 20 ft cable PT960.....59.

**Temperature / Relative Humidity**  
 Probe, 1 ft leads TRH-100 .....225.  
 Probe, 10 ft cable TRH-100-10FT .....242.  
 Probe, 20 ft cable TRH-100-20FT .....248.  
 Module, Temp / RH TRH-200 .....232.  
 Module, Temp / RH / Light TRH-300 .....243.

**Input Scaling Module** ISM-x-x-x-x\* .....83.  
*\*See page 11 to specify part number.*

**Thermocouple / Millivolt Modules**  
 Mvt-50u .....154.  
 Mvt-50u .....154.

Type J Thermocouple Probe\* PT450.....77.  
*\*Requires Mvt-50u Thermocouple Module*

**AC Current Sensors**  
 SC20A.....121.  
 SC50A.....118.  
 SC100A,SC200A .....116.  
 SC500A.....149.  
 SC1000A.....182.  
 SC1500A.....191.

**AC Voltage Sensor** SV300 .....215.

**Accelerometers**  
 SA-03 .....248.  
 SA-03-30FT .....275.  
 SA-16 .....248.  
 SA-16-30FT .....275.

**Solar Radiation Sensor** SRS-200 .....312.  
 Mounting Bracket & Leveling Plate SRS-LB .....72.

**Pressure Sensors.**  
 P400 all ranges\* .....198.  
 P500-BARO .....176.  
 P600 all ranges\* .....198.  
 P1600 all ranges\* .....193.  
 P1650 all ranges\* .....242.

*\*Specify range - see pages 6 - 8 for available part numbers.*

Opt. Mounting Base: P400 & P500 MB-4500 .....14.

**Weatherproof Cases**  
 EC24-BLK .....61.  
 EC44 .....72.  
 EC506 .....83.

**Spare Parts**  
 Terminal Block TB-P6 .....11.  
 Pocket Logger Battery U9VL .....12.

**Parts for discontinued XR440 Data Logger**

Interface Cable, 5ft IC209.....25.  
 USB Adapter USB-A.....30.

*Prices are in US Dollars for export outside of North America.  
 North American prices at [www.pace-sci.com/xr450.pdf](http://www.pace-sci.com/xr450.pdf)  
 Prices subject to change without notice; revised Feb. 2023*

**TECHNICAL SUPPORT**

**Free technical support** is available by phone during business hours (Mon - Fri, 9AM - 5PM EST).  
 Or email your questions to: [support@pace-sci.com](mailto:support@pace-sci.com)



**Pace Scientific, Inc.**

PO Box 2263, Boone, NC 28607 USA [sales@pace-sci.com](mailto:sales@pace-sci.com)

Tel: 704-799-0688

Website: [www.pace-sci.com](http://www.pace-sci.com)